

The logo for LINC (Lithotripsy and Shockwave) features a stylized, curved shape in shades of red, orange, and yellow, resembling a shockwave or a catheter tip, set against a dark blue background. The letters "LINC" are positioned to the right of this graphic.

LINC

Shockwave Medical Lithoplasty[®] Catheter

*Marianne Brodmann, MD
Medical University of Graz
Graz, Austria*

Lithoplasty[®] Technology

Lesion modification using lithotripsy in a balloon



**Tissue-selective:
Hard on hard tissue,
Soft on soft tissue**

***Lithotripsy waves
travel outside balloon***

***Designed to disrupt
both superficial, deep
calcium***

- Designed to normalize vessel wall compliance prior to controlled, low pressure dilatation
- Effective lesion expansion with minimized impact to healthy tissue
- Familiar Balloon-based endovascular technique
- “Front-line” balloon strategy (.014” compatible)



SHOCKWAVE
MEDICAL INC

*Impact
Beyond the
Balloon.™*

The logo for LINC (Lithotripsy and Shockwave) features a stylized, curved shape in shades of red, orange, and yellow, resembling a flame or a shockwave, positioned above the letters 'LINC' in a white, sans-serif font.

LINC

Shockwave Medical Lithoplasty[®] Catheter Taped Case

*Marianne Brodmann, MD
Medical University of Graz
Graz, Austria*

Case # 1 - LKH Klinikum Graz

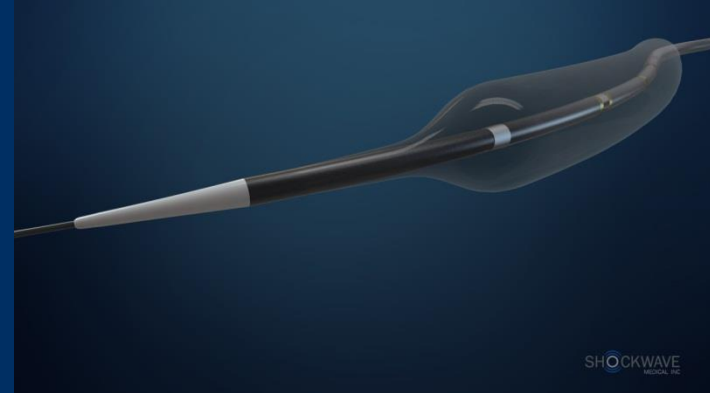
- 81 yr-old, male
 - History of intermittent, lifestyle limiting claudication
 - Bi-lateral peripheral disease previously treated
 - Hypertension
 - Ex-smoker
 - Hyper-lipidemia
 - No history of Coronary or Cerebrovascular disease

Lithoplasty® System

Generator



Lithoplasty® Catheter

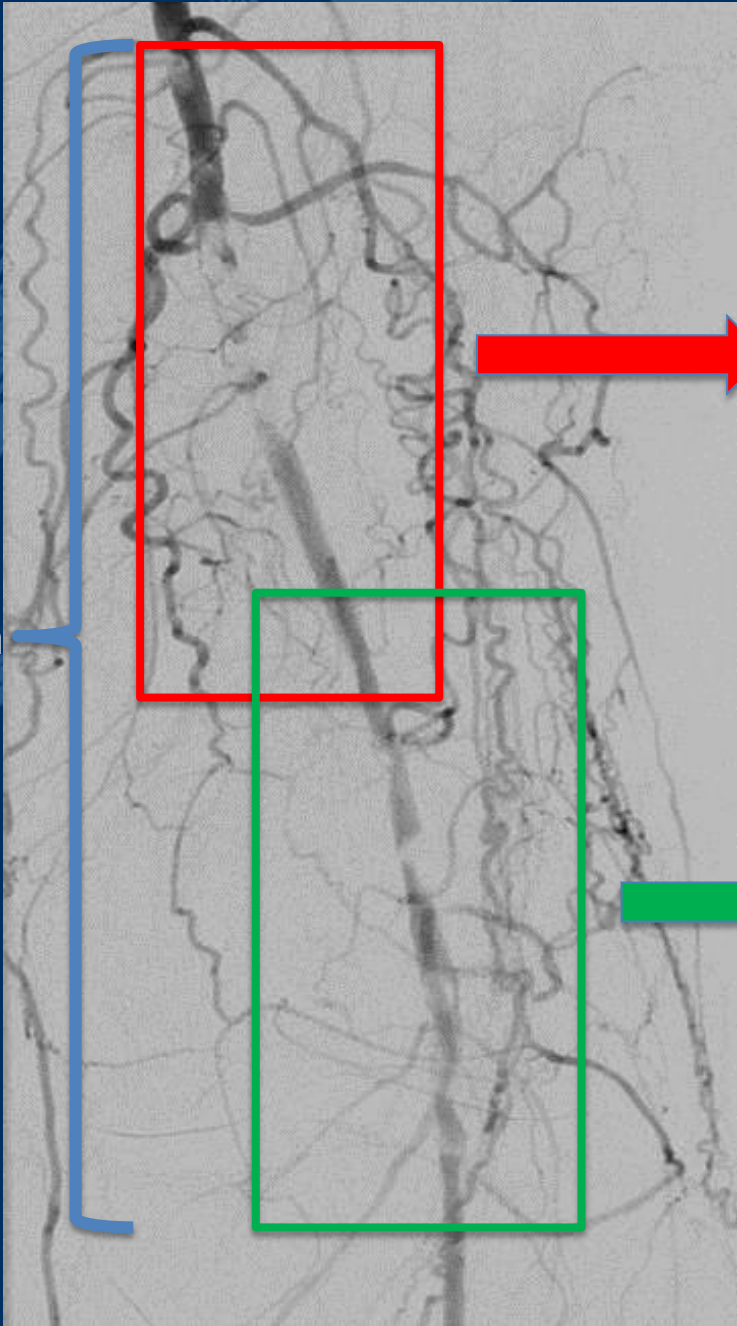


Connector Cable



- .014" Guidewire Compatible
- 110 cm Working Length

| Diameter | Length |
|----------|--------|
| 3.5 mm | 60 mm |
| 4.0 mm | 60 mm |
| 4.5 mm | 60 mm |
| 5.0 mm | 60 mm |
| 5.5 mm | 60 mm |
| 6.0 mm | 60 mm |
| 6.5 mm | 60 mm |
| 7.0 mm | 60 mm |



~ 21 cm

5.5mm RVD treatment zone
of total occlusion

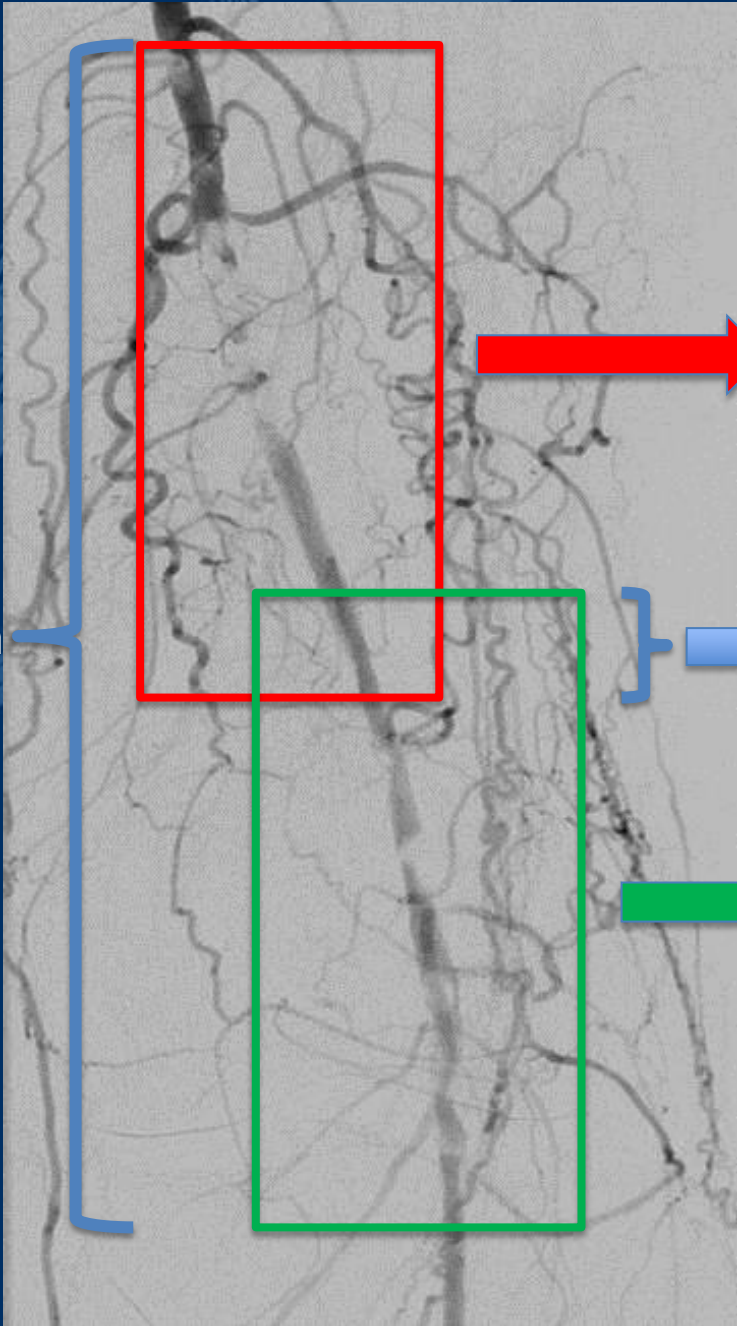
4.5mm RVD treatment zone
of sub-total occlusion

Lithoplasty[®] System Preparation

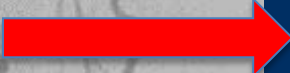
- Turn on Generator
- Attach Connector Cable to Generator
- Prepare Lithoplasty[®] Catheter using standard balloon prep techniques
- Advance Catheter to treatment site
- Attach Connector Cable to Catheter

Lithoplasty[®] System Treatment Sequence

| Step | Action | Balloon Pressure |
|------|---|------------------|
| 1 | Position catheter at site of lesion and inflate catheter with 50/50 contrast saline mix | 4 Atm |
| 2 | Press Connector Cable button and deliver 30 pulsatile mechanical waves through the balloon | 4 Atm |
| 3 | Inflate Lithoplasty balloon to RVD | 6 Atm |
| 4 | Deflate and repeat steps 1-3 | N/A |
| 5 | As needed, reposition to another treatment area. Proceed with steps 1-4. (up to 6 cycles in total per catheter) | N/A |



~ 21 cm



5.5mm RVD treatment zone
of total occlusion

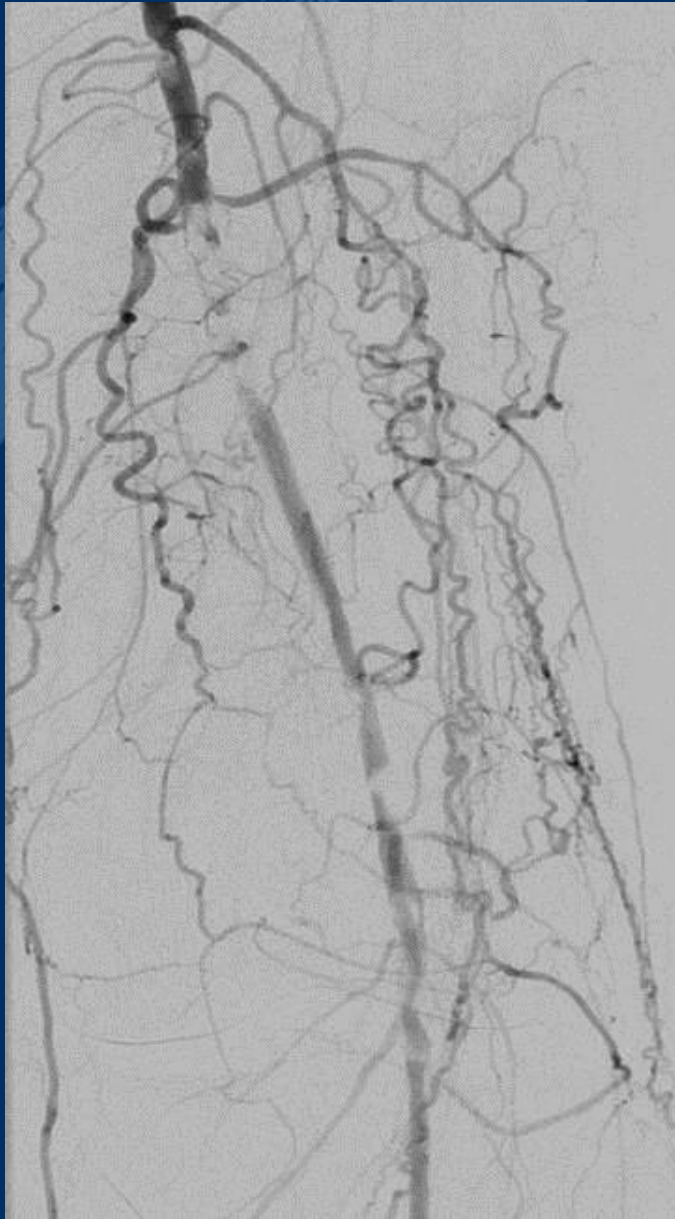


≥ 1 cm treatment overlap zone

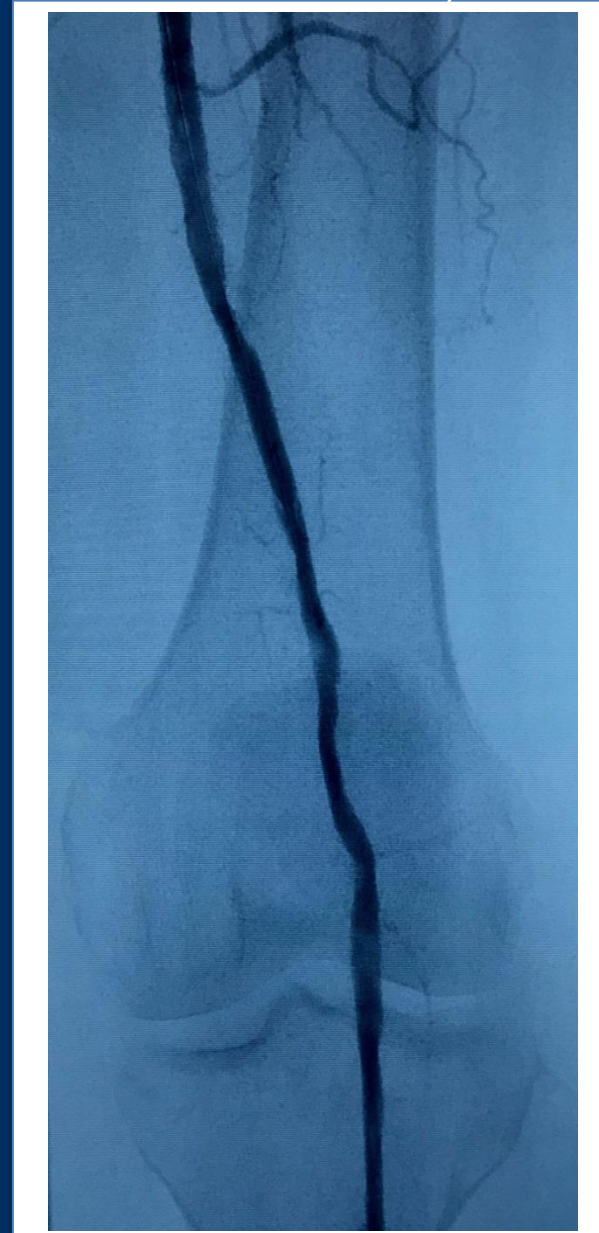


4.5mm RVD treatment zone
of sub-total occlusion

Diagnostic
Angiogram



Final Angiogram
(No stents or other
devices used)



The logo for LINC (Lithotripsy and Shockwave) features a stylized, curved shape in shades of red and orange, resembling a shockwave or a catheter tip, positioned above the letters 'LINC' in a white, sans-serif font.

LINC

Shockwave Medical Lithoplasty[®] Catheter

Marianne Brodmann, MD
Medical University of Graz
Graz, Austria