

The logo for LINC (Lowa Institute for Normal Circulation) features a stylized, abstract shape in red and orange, resembling a flame or a dynamic motion, set against a dark blue background. The letters "LINC" are positioned to the right of this graphic.

LINC

DIRECTIONAL ATHERECTOMY

for the Treatment of Recurrent Distal Anastomotic Stenosis of Aortobifemoral Bypass

Eric C. Scott, MD
Department of Vascular Surgery
The Iowa Clinic
West Des Moines, Iowa, USA

Disclosure

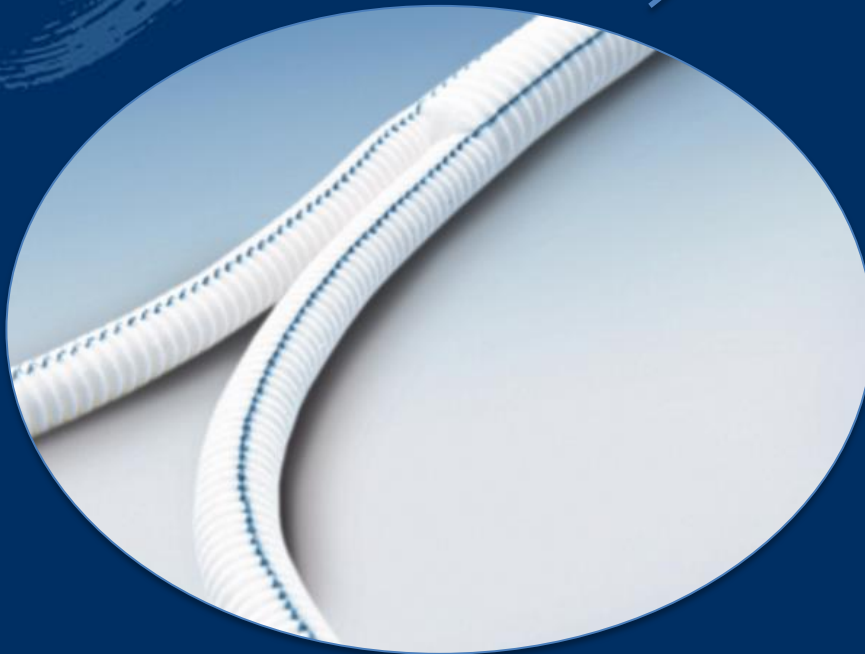
I have the following potential conflicts of interest to report:

- Speaker (Medtronic)
 - Employment in industry
 - Stockholder of a healthcare company
 - Owner of a healthcare company
 - Other(s)
-
- I do not have any potential conflict of interest

AORTOBIFEMORAL BYPASS OUTCOMES

355 aortoiliofemoral bypass procedures

5 Year Primary Patency: **85%**



Limb Occlusion: 10%

Outflow Stenosis: 5%

50 YO FEMALE WITH RECURRENT R LEG CLAUDICATION

2002 – Coarctation repair with
infrarenal aortic tube graft at outside
hospital

2005 – Thoraco-L femoral bypass and
femoral-femoral bypass

2008 – R femoral endarterectomy,
revision of distal anastomosis



50 YO FEMALE WITH RECURRENT R LEG CLAUDICATION

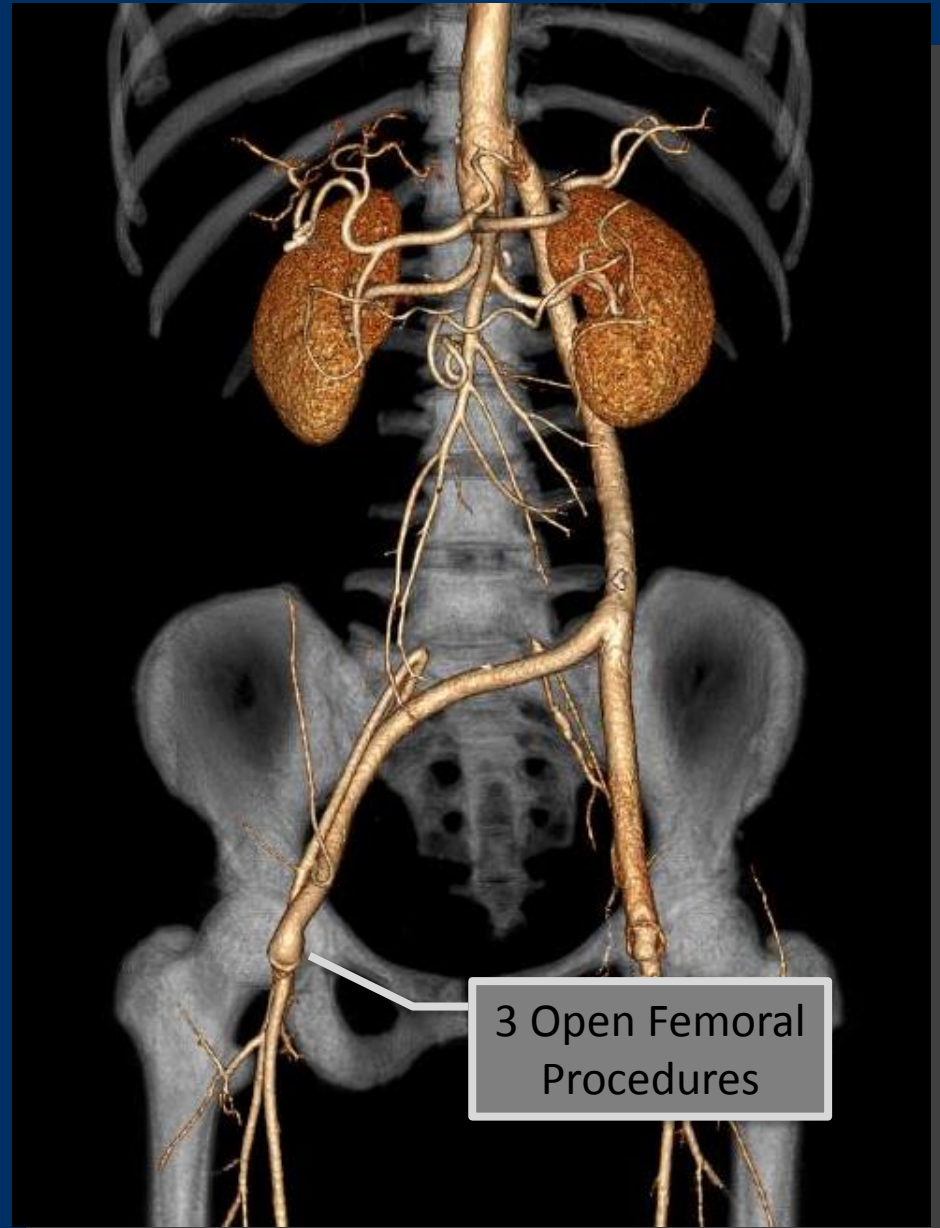
2009 – Revision of thoracofemoral bypass, ligation of femoral-femoral bypass for recurrent R femoral anastomotic stenosis

2011 – Recurrent claudication and R femoral stenosis
(6mm cutting balloon angioplasty)

2012 – Recurrent R femoral stenosis and 1-block claudication

* Arterial duplex – PSV 440cm/sec

* ABI 0.80



RIGHT FEMORAL ANGIOGRAM

RIGHT EXTERNAL ILIAC
ARTERY



left groin graft access

RIGHT LIMB OF
AORTOBIFEMORAL BYPASS

DIRECTIONAL ATHERECTOMY



TurboHawk LX-M

6mm Spider Filter

16 Concentric Passes

6mm x 40mm Final PTA



DIRECTIONAL ATHERECTOMY



INITIAL

TurboHawk LX-M

6mm Spider Filter

16 Concentric Passes

6mm x 40mm Final PTA



DIRECTIONAL ATHERECTOMY



TurboHawk LX-M

6mm Spider Filter

16 Concentric Passes

6mm x 40mm Final PTA



DIRECTIONAL ATHERECTOMY



INITIAL

TurboHawk LX-M

6mm Spider Filter

16 Concentric Passes

6mm x 40mm Final PTA



FINAL

3-YEAR FOLLOW-UP

Claudication Resolved

ABI 0.98

Arterial Duplex Velocity
155 cm/sec

38 Month Follow-Up Angiogram



CONCLUSIONS

Directional Atherectomy
Can Be Used To Emulate
Surgical Endarterectomy
With Less Impact on Media,
Adventitia

Cases Such As These Suggest
Such An Approach May
Reduce Intimal Hyperplasia

38 Month Follow-Up Angiogram



The logo for LINC (Liaison in Neurovascular Care) features a stylized, colorful graphic of a brain or neural pathway in shades of red, orange, and yellow, set against a dark blue background. The letters "LINC" are positioned to the right of this graphic.

LINC

DIRECTIONAL ATHERECTOMY

for the Treatment of Recurrent Distal Anastomotic Stenosis of Aortobifemoral Bypass

Eric C. Scott, MD
Department of Vascular Surgery
The Iowa Clinic
West Des Moines, Iowa, USA